



Making  
Quality Healthcare  
Affordable  
Across the Globe



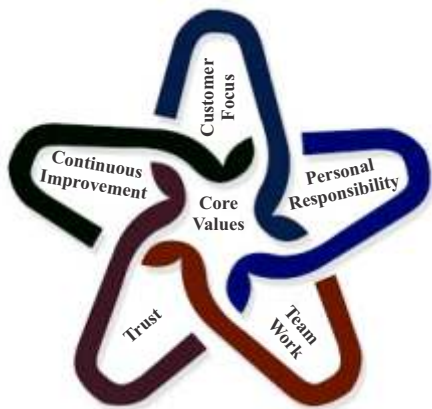
**SYDLER**

COMMITMENT • EXCELLENCY • QUALITY



## Mission Statement

"Making Quality Healthcare Affordable Across The Globe"



## TEAM WORK

Creativity and project success comes from teamwork and Sydlar recognizes this fact very well. Teamwork means developing new skills among members of the team, and developing a sense of confidence to tackle any projects in the future.

## TRUST

Trust in the workplace is critical to organizational success. At Sydlar we trust each other enough to ask for their help for business success.

## Vision & Mission Statement



Sydlar's vision is to be world's most customer centric company; an organization where customers can come to find superior quality and personalized service for Herbal Formulations, Nutraceuticals, Pharmaceuticals, packaging Solutions & selected traded products.

We, at Sydlar, are sincerely pursuing an objective to earn customer appreciation, with a focus on high quality products, timely delivery, & memorable service-through an energetic and dedicated team of professionals. Presently, we are in the process of achieving a turnover of INR 1000 crores by the year 2020.



## Customer focus

At Sydlar the customer is the end all and be all of our endeavours. This is evident in our commitment to build long-term partnerships, understanding the impact of our actions on our customer's business, providing excellent service and quality, and delivering on our promises and commitments.

## CONTINUOUS IMPROVEMENT

We strive to improve our systems, processes, and performance continuously to help businesses save money time and energy. We are actively involved in questioning not only how we work internally, but also how our clients and suppliers might improve their services. Our today is more productive than yesterday; and we are enhancing our efficiency for tomorrow.

## PERSONAL RESPONSIBILITY

We recognize that we have an important role in supporting our colleagues, and servicing our customers. They depend on us every day. We take personal responsibility for all our actions undertaken to perform our job.




## Message From Management Desk

**Pankaj Jain**  
Chairman & Managing Director



We're building on our history of hard work, diligence and success, by working tirelessly to enhance the value we are committed to provide towards improving health and the quality of lives across the world. We are proud to cater the Pharmaceutical markets by our Quality Results at affordable price by strategically developed strong distribution system with our successful team.

At Sydlar we have dedicated ourselves to human health by continuous improvement to satisfy the need of our customer. We prepare for the opportunities and challenges ahead, and we will continue to make decisions based on the needs of our patients and the community.

Sydlar is a brand in the pharmaceutical industry because of you .We invite your suggestions & feedback to cater to in a better way. 





## Manufacturing :

Sydler manufactures a wide range of Pharmaceutical formulations at its independent, modern state-of-the-art manufacturing facilities, where distinguished quality control department and research & development unit is been maintained. Sydler manufacturing facilities comprising of Non Beta lactam tablet, capsules, powder and ointment at MIDC, Bhosari , Pune. Approximately 5 km away from Pune Airport and 2hrs.30mins drives from Mumbai International Airport.

Regular in house and sponsored manpower training and development programs provide a regulatory environment that encourages continuous improvement in process, testing methods and Total Quality Compliance (TQC).

Sydler Plant embraces GMP (Good Manufacturing Practice) Standards including WHO GMP norms laid down by the World Health Organization and cGMP norms laid down in the "Revised Schedule M" by the Drug Controller (General) of India, Ministry of Health & Family Welfare, and Government of India. Moreover, Sydler's operations complies with ISO 9001:2008 quality management certification.

Competent, experienced, motivated production & quality control staff manages the operations. The company is comprised of educated professionals in their respective departments such as Production, Research & Development, and Testing.

Salient features of Sydler Pharmaceutical Formulations manufacturing facilities:

- SS reverse laminar flow.
- Separate AHUs for every production department, with classified filtration as per CGMP norms.
- Individual compression and coating cabins with separate AHUs to avoid cross contamination
- Modernized Quality Control Laboratory with H.P.L.C. Microbiology & Sterility area
- Water Treatment system with RO (Reverse Osmosis) & EDI (Electron de Ionization) and SS 316L pipeline in loop form with a 5-micron filter and UV lamp for absolute purity of water.
- Regular in house and sponsored manpower training development programs provide a regulatory environment that encourages continuous improvement in process and testing.
- A unidirectional flow of men and materials to promote optimum productivity
- Ample segregated storage for raw materials and packaging materials, with cold room facilities for raw material, quarantine & finished goods.



## Manufacturing Facilities Approved by :



Kenya



Yemen



Malawi



Cote D'Ivoire

## Quality Control (QC) and Quality Assurance (QA):

Comprehensive product quality is surely promised and is tested thoroughly at different stages like procurement, production, packing and distribution. The company has an in house quality control department, which has modern testing facilities for quality and hygienic packaging. The company since the time of its inception has been constantly striving to provide technological superiority, high quality products at best competitive prices.

All of our products undergo extensive R & D and stringent quality control norms as per International norms, using sophisticated & latest instrument. The entire activity is supported by detail documentation on the production process, flow chart and method of in-process quality control and Batch Manufacturing Records (BMR)

## Packaging

Sydler's experienced quality control department maintains the integrity, honesty, and reliability of our spectrum of products and extends to swathe the packaging of every product to maintain safety and stability. In every packaging option, packaging materials and processes conform to international standards, with regard to a host of critical parameters, including:

- Medical grade, non-toxic material
- Compliance with all regulatory requirements
- Excellent oxygen and moisture barrier properties whenever required.
- Consistent top quality

Optimum packaging is complemented by a classy, contemporary look, created by in- house design professionals, and executed at top-of-the-line printing presses. Packaging and labelling are continuously reviewed to enhance aesthetics and clarity.

We aim to provide packaging to suit consumer in the market. Customer friendly, easier compliance with dosage and logistic convenience.



Plant GMP



ISO 9001 : 2008



WHO - GMP



### Business Operations Spectrum :

Sydler strives to fetch the Pharma formulary market on the basis of Its Quality credit created by hard efforts of last decades nationally and internationally.

For active participation in generation of Foreign Revenue for the country and to cater our valuable multinational customers ,focus on the international export oriented market in Latin American countries , Costa Rica , Czech Republic , Ghana , Nigeria , South Africa , Kenya , Gulf countries , Tajikistan , Sri lanka , Indonesia , Philippines etc.

Indigenous presence is supported in its endeavours through its extensive network of distribution channel, business associates, NGOs, Central government institutions like Armed Force , CGHS , ESIC Hospitals , AIIMS & in various healthcare projects of Ministry of Health & Family Welfare and in various state government institutions like Directorate of Health Services and medical services corporation across the country.

Sydler is also in business with various state & central government Pharmaceuticals Undertaking like HLL , BCPL , RDPL etc.

Thought process is continuous to launch our leader, branded and well demand products in Indian Pharmaceutical trade business.



### Regulatory Affairs:

Sydler International has strong agile team of regulatory affairs people who can prepare & present registration documents/dossiers to the regulatory authorities in the Emerging Markets in any format viz. CTD, ACTD etc. or as per country specific guidelines.



## Therapeutic Segments:

Sydler international has a noble goal of providing the best formulations in healthcare across the globe wherever it operates, provide quality health care solutions to the ailing millions by catering to various therapeutic segments :

Anti-hypertensives / Hypolipidemic Agents

Anti-Virals

Anti Diabetic Drugs

Vitamins And Minerals / Hematinics

Anti Helminthics

Anti Bacterial / Antibiotics

Hepato-Biliary

Anti Diarrheal / Antiprotozoal Agents

Antipsychotics / Psychotropics / Anti Depressants / Anxiolytics

Anti-inflammatories / Analgesics / Antiarthritics

Anti Spasmodic Agents

Hormones And Related Drugs

Ergot Alkaloids

Anti-Thyroid

Erectile Dysfunction Treating Agents

Smoking Cessation Agents

Anti Obesity Agents

Gout Treating Drugs

Anti-Fungals

Anti -Ulcerants

Antiallergics / Antihistamines / Anti Cold Agents

Anti Emetic

Hemostatic Agents

Anti Prostate / Urinary Incontinence Treating Agents

Steroids



## Therapywise Product Range:

### CARDIOVASCULAR DRUGS (ANTI-HYPERTENSIVES, HYPOLIPIDEMIC AGENTS)



| GENERIC NAME                                       | STRENGTH                   | BRAND                            |
|--|----------------------------|----------------------------------|
| Amlodipine Besylate Tablets                        | 5mg/10mg/20mg              | KORAZON-5/10/20                  |
| Amlodipine & Lisinopril Tablets                    | 5mg + 5mg                  | KORAZON-PLUS                     |
| Amlodipine and Atenolol Tablets                    | 5mg + 50mg                 | KORAZON-AT 50                    |
| Simvastatin Tablets                                | 10mg/20mg                  | REDULIP-10/20                    |
| Simvastatin & Ezetimibe Tablets                    | 10mg/20mg & 10mg           | REDULIP PLUS/FORTE               |
| Atorvastatin Tablets                               | 10mg/20mg/40mg/80mg        | GRASALIP-10/20/40/80             |
| Atorvastatin & Ezetimibe Tablets                   | 10mg/20mg +10mg            | GRASALIP PLUS/GRASALIP FORTE     |
| Atorvastatin & Amlodipine Tablets                  | 10mg + 5mg                 | GRASALIP AM                      |
| Rosuvastatin Tablets                               | 5mg/10mg/20mg              | ROZALIP-5/10/20/REDUKOL-5/10/20  |
| Clopidogrel Tablets                                | 75mg                       | CHEMIC-75                        |
| Clopidogrel & Aspirin Tablets                      | 75mg +75mg                 | CHEMIC-75 AS                     |
| Losartan Potassium Tablets                         | 25mg/50mg/100mg            | CARDLOS-25/50/100                |
| Losartan Potassium & Amlodipine Tablets            | 50mg + 5mg                 | KORAZON-L 50                     |
| Losartan Potassium & Hydrochlorothiazide Tablets   | 50mg +12.5mg               | CARDLOS-HTZ                      |
| Ramipril Tablets                                   | 1.25mg/2.5mg/5mg/10mg      | ALDOSTRIL-1.25/2.5/5/10          |
| Telmisartan & Ramipril Tablets                     | 40mg+5mg                   | GENSITAN-R                       |
| Ramipril & Hydrochlorothiazide Tablets             | 5mg +12.5mg                | ALDOSTRIL-HTZ                    |
| Lisinopril Tablets                                 | 2.5mg/5mg/10 mg            | GENPRIL-2.5/5/10                 |
| Captopril Tablets                                  | 12.5mg/25mg/50mg           | CAPTOCARD-12.5/25/50             |
| Trimetazidine Hydrochloride Tablets                | 20mg/35mg Modified Release | ANGIVENT-20/35MR/TRIZINA-20/35MR |
| Valsartan Tablets                                  | 40mg/80mg/160mg            | MYCARD-40/80/160                 |
| Valsartan & Hydrochlorothiazide Tablets            | 80/160mg + 12.5mg          | MYCARD HCT-80/160                |
| Telmisartan Tablets                                | 20mg/40mg/80mg             | GENSITAN -20/40/80               |
| Telmisartan & Hydrochlorothiazide Tablets          | 40mg +12.5mg               | GENSITAN-HCT 12.5                |
| Olmesartan Medoxomil                               | 10mg/20mg/40mg             | OLGARD-10/20/40                  |
| Olmesartan Medoxomil & Hydrochlorothiazide Tablets | 20/40mg & 12.5mg           | OLGARD-HCT 20/40                 |
| Atorvastatin & Fenofibrate Tablets                 | 10mg & 160mg               | FIBRALIP-A                       |
| Fenofibrate Tablets                                | 160mg/200mg                | FIBRALIP-160/200                 |
| Hydrochlorothiazide Tablets                        | 12.5mg/25mg/50 mg          | GENKLOZIODE-12.5/25/50           |
| Diltiazem Hcl Tablets                              | 30mg/60mg                  | PECTOZEM-30/60                   |
| Atenolol Tablets                                   | 50mg/100mg                 | GENCARD-50/100                   |
| Metoprolol Succinate Tablets Extended Release      | 25mg/50mg/100mg ER         | KISTAMET XL- 25/50/100           |
| Carvedilol Tablets                                 | 3.125mg/6.25mg/12.5mg/25mg | LECARV-3.125/6.25/12.5/25        |
| Propranolol Tablets                                | 10mg/20mg/40mg/80mg        | KORANOL-10/20/40/80              |
| Ezetimibe Tablets                                  | 10mg                       | EZISTO-10                        |
| Doxazosin Mesylate Tablets                         | 1mg/2mg/4mg                | NOKSIN-1/2/4                     |
| Digoxin Tablets                                    | 0.25mg                     | GLYDIG                           |
| Warfarin Sodium Tablets                            | 1mg/2mg/5mg                | WARPUL-1/2/5                     |
| Frusemide Tablets                                  | 40mg                       | ALDALIX-40                       |
| Spironolactone Tablets                             | 25mg/100mg                 | VASCOTON-25/100                  |
| Enalapril Maleate Tablets                          | 2.5mg/5mg/10mg             | -----                            |



## Therapywise Product Range:

### ANTI DIABETIC DRUGS



| GENERIC NAME   | STRENGTH               | BRAND                |
|--|------------------------|----------------------|
| Glibenclamide Tablets  | 2.5mg/5mg/10mg         | SACRAGLIP-2.5/5/10   |
| Glibenclamide 2.5 mg and Metformin Hydrochloride 400 mg Tablets                              | 2.5mg+400mg            | SACRAGLIP-Plus       |
| Glibenclamide 5 mg and Metformin Hydrochloride 500 mg Tablets                                | 5mg + 500mg            | SACRAGLIP-Forte      |
| Gliclazide Tablets   | 80mg                   | GEZIDE               |
| Gliclazide & Metformin Hydrochloride Tablets   | 80mg + 500 mg          | GEZIDE-M 80          |
| Glimepiride Tablets  | 1 mg/2mg/3mg/4mg       | GLIFAST-1/2/3/4      |
| Glimipride & Metformin Hydrochloride SR Tablets  | 1/2mg & 500mg          | GLIFAST MF 1/2       |
| Metformin HCl Tablets  | 500mg/850mg/1 gm       | BIGUGEN-500/850/1000 |
| Pioglitazone Hydrochloride 15 mg and Metformin Hydrochloride 500 mg Extended Release Tablets | 15mg + 500mg           | HYPOGLIT-M 15        |
| Pioglitazone Hydrochloride 30 mg and Metformin Hydrochloride 500mg Extended Release Tablets  | 30mg + 500mg           | HYPOGLIT-M 30        |
| Pioglitazone Tablets   | 15mg/30mg              | HYPOGLIT-1 5/30      |
| Rosiglitazone Tablets  | 2mg/4mg                | GLITOS 2/4           |
| Rosiglitazone & Metformin Tablets  | (2mg+500mg)(4mg+500mg) | GLITOS M 2/4         |
| Acarbose Tablets   | 25mg/50mg              | GENCQS-25/50         |
| Voglibose Tablets  | 0.2mg/0.3mg            | -----                |

### VITAMINS AND MINERALS/ HEMATINICS



| GENERIC NAME                                  | STRENGTH      | BRAND         |
|---|---------------|---------------|
| Calcium Carbonate+ Vit D3 Tablets             | 500mg+250I.U. | BUKOKAL       |
| Glucosamine Tablets                           | 1500mg        | JOINTVIT      |
| Glucosamine & Chondroitin Sulfate Sod Tablets | 500mg+400mg   | JOINTVIT PLUS |
| Vitamin C Tablets                             | 500mg         | ASKOGEN       |
| Antioxidant + Vitamins + Minerals Capsules    | -----         | ANVIMIN-XT    |
| B-Complex Forte With Vitamin C Capsules       | -----         | SURVIT        |
| Folic Acid Tablets                            | 5mg           | -----         |
| Vitamin B-Complex Injections                  | 2ml/10ml      | -----         |
| Thiamine Tablets                              | 50mg          | -----         |

## Therapywise Product Range:

### ANTI BACTERIAL/ANTIBIOTICS



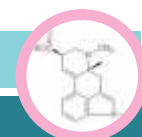
| GENERIC NAME             | STRENGTH          | BRAND                |
|--------------------------|-------------------|----------------------|
| Azithromycin Tablets     | 250mg/500mg       | GORNOL-250/500       |
| Roxithromycin Tablets    | 150mg/300mg       | LEGIROX - 150/300    |
| Roxithromycin Tablets    | 50mg              | LEGIROX - DT         |
| Ciprofloxacin Tablets    | 500mg/250mg/1gm   | QUINFLOX/QUINFLOX-OD |
| Clarithromycin Tablets   | 250mg/500mg       | GENOCLAR-250/500     |
| Norfloxacin Tablets      | 400mg             | ENTRONOR-400         |
| Levofloxacin Tablets     | 250mg/500mg/750mg | QUINOGEN-250/500/750 |
| Ofloxacin Tablets        | 200mg/400mg       | GENOFF-200/400       |
| Doxycycline Capsules     | 100mg/200mg       | RIKDOX-100/200       |
| Gatifloxacin Tablets     | 200mg/400mg       | SEGAT-200/400        |
| Clindamycin Hcl Capsules | 150mg/300mg       | EMPYCIN-150/300      |
| Chloramphenicol Capsules | 250mg/500mg       | -----                |
| Tetracycline capsules    | 250mg/500mg       | -----                |
| Co-Trimoxazole Tablets   | 480mg             | -----                |

### ANTI DIARRHEAL/ANTIPROTOZOAL AGENTS



| GENERIC NAME                           | STRENGTH      | BRAND        |
|--|---------------|--------------|
| Loperamide Capsules                    | 2mg           | ADILOP       |
| Tinidazole Tablets                     | 500mg         | TRIKOGEN-500 |
| Ofloxacin + Ornidazole Tablets         | 200mg + 500mg | GENOFF OZ    |
| Ciprofloxacin & Tinidazole Tablets     | 500mg + 600mg | QUINFLOX-TZ  |
| Norfloxacin with Beta-cyclodextrin And |               |              |
| Tinidazole Tablets                     | 400mg+600mg   | ENTRONOR -TZ |
| Diphenoxylate Hydrochloride and        |               |              |
| Atropine Sulphate Tablets              | 2.5mg+0.025mg | ATRODIP      |
| Ofloxacin + Nitazoxanide Tablets       | 200mg+500mg   | GENOFF-N     |
| Metronidazole Tablets                  | 200mg/400mg   | -----        |

### ERGOT ALKALOIDS



| GENERIC NAME                     | STRENGTH | BRAND          |
|----------------------------------|----------|----------------|
| Methylergonovine Maleate Tablets | 0.5mg    | ERGITRIN - 0.5 |
| Methylergometrine Tablets        | 0.125mg  | ERGOGEN -0.125 |

## Therapywise Product Range:

### ANTIPSYCHOTICS/ PSYCHOTROPICS /ANTI DEPRESSANTS /ANXIOLYTICS



| GENERIC NAME  | STRENGTH                           | BRAND                               |
|---|------------------------------------|-------------------------------------|
| Escitalopram Oxalate Tablets                        | 5mg/10mg/20mg                      | ANXIPRAM 5/10/20/ESODEP 5/10/20     |
| Escitalopram & clonazepam Tablets                   | (10+0.5)mg/(5+0.25)mg              | ANXIPRAM PLUS/ESODEP PLUS           |
| Citalopram Hydrobromide Tablets                     | 10mg/20mg/40mg                     | EXLICIT - 10/20/40                  |
| Fluoxetine Tablets                                  | 10mg/20mg/40mg/60mg                | GENAC-10/20/40/60                   |
| Mirtazapine Tablets                                 | 7.5mg/15mg/30mg/45mg               | GENZAPIN-7.5/15/30/45               |
| Olanzapine Tablets                                  | 5mg/10mg/20mg                      | ZONIA-5/10/20                       |
| Paroxetine Tablets                                  | 10mg/20mg/30mg/40mg                | PAXEGEN-10/20/30/40                 |
| Quetiapine Tablets                                  | 25mg/50mg/100mg/200mg /300mg       | SYKOQUIT / KYZO -2.5/50/100/200/300 |
| Resperidone Tablets                                 | 1mg/2mg/3mg/4mg                    | RESENIA-1/2/3/4                     |
| Rizatriptan Tablets                                 | 5mg/10mg                           | EXRIZ-5/10                          |
| Sertraline Tablets                                  | 25mg/50mg/100mg                    | STARTLINE-25/50/100/SERI25/50/100   |
| Sumatriptan Succinate Tablets                       | 25mg/50mg/100mg                    | SUMIG-25/50/100                     |
| Venlafaxine Hydrochloride Extended-Release Capsules | 37.5mg/75mg/150mg                  | FELIXINE- ER 37.5/75/150            |
| ImipramineHcl Tablets                               | 25mg/50mg/75mg                     | MODUMINE-25/50/75                   |
| Amitriptyline Tablets                               | 10mg/25mg/50mg/75mg                | GENPILOL-10/25/50/75mg              |
| Aripiprazole Tablets                                | 5mg/10mg/15mg/20mg/30mg            | ARISKIZ-5/10/15/20/30               |
| Modafinil Tablets                                   | 100mg/200mg                        | GENDANIL-100/200                    |
| Ramelteon Tablets                                   | 8mg                                | RAMARE                              |
| Alprazolam SR Tablets                               | 0.5mg/1mg/2mg                      | ENFALAM-SR 0.5/1/2mg                |
| Clonazepam Tablets                                  | 0.5mg/1mg/2mg                      | LEGAKLON-0.5/1/2                    |
| Donepezil Hydrochloride Tablets                     | 5mg/10mg                           | ADAZIL-5/10                         |
| Duloxetine Hcl Capsules                             | 20mg/30mg/40mg/60mg                | DUFEZ-20/30/40/60                   |
| Duloxetine & methylcobalamine                       | (40 mg + 500mcg) /(60mg + 1000mcg) | DUFEZ-ME/DUFEZ-ME Forte             |
| Oxcarbazepine Tablets                               | 150mg/300mg/450mg/600mg            | OXSEIZ-150/300/450/600              |
| Piracetam Tablets                                   | 400mg/800mg/1200mg                 | CERV TAM 400/800/1200               |
| Topiramate Tablets                                  | 25mg/50mg/100mg                    | GENTOP-25/50/100                    |
| Methylcobalamin Tablets                             | 500mcg/1500 meg                    | MELAGEN/ MELAGEN-Forte              |
| Selegiline Hcl Tablets                              | 5mg/10mg                           | PARKISEL-5/10                       |
| Gabapentin & Methylcobalamin Tablets                | 300mg + 500mcg                     | SEGAB-ME                            |
| Gabapentin Capsules                                 | 100mg/300 mg /400 mg               | SEGAB-100/300/400                   |
| Pregabalin Capsules                                 | 75mg/150mg/300mg                   | GRIPALIN-75/150/300                 |
| Phenytoin Sodium Tablets                            | 25mg/50mg/100mg                    | GRADIL-25/50/100                    |
| Levetiracetam Tablets                               | 250mg/500mg/750mg                  | CLOSEIZ - 250/500/750               |
| Memantine Hydrochloride Tablets                     | 5mg/10mg                           | MEMADEM-5/10                        |
| Chlordiazepoxide Tablets                            | 10mg                               | CLOLIB-10                           |
| Sertraline & Alprazolam                             | (25 +0.5)mg/(50+0.5)mg             | -----                               |
| Diazepam Tablets                                    | 2mg/5mg/10mg                       | -----                               |
| Eszopiclone Tablets                                 | 1mg/2mg/3mg                        | -----                               |
| Flupenthixole Melitracen                            | (12.5/25/37.7)mg                   | -----                               |
| Levodopa & carbidopa                                | (100+10)mg,(250+25)mg,(100+25)mg   | -----                               |
| Trifluoperazine & Trihexyphenidyl 2 mg              | 5mg + 2mg                          | -----                               |
| Trifluoperazine & Trihexyphenidyl & Chlorpromazine  | 5mg + 2mg + 50mg                   | -----                               |



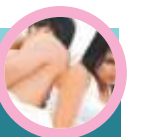
## Therapywise Product Range:

### ANTI-INFLAMMATORIES / ANALGESICS / ANTI ARTHRITIS / ANTI SPASMODIC AGENTS



| GENERIC NAME   | STRENGTH            | BRAND                  |
|--|---------------------|------------------------|
| Aceclofenac + Paracetamol Tab                        | 100mg + 500mg       | CONJUNAC PLUS          |
| Aceclofenac Tablets                                  | 100mg/200mg SR      | CONJUNAC/CONJUNAC-SR   |
| Alendronic Acid Tablets                              | 10mg/35mg/70mg      | KOSTAM AX-10/35/70     |
| Diclofenac Sodium Tablets                            | 50mg/75mg/100mg     | ARTHONAC-50/SR75/SR100 |
| Diclofenac Sodium with Serratiopeptidase Tablets     | 50mg + 10mg         | LOCASER                |
| Dicyclomine Hydrochloride & Paracetamol Tablets      | 20mg + 500mg        | RELIQUICK              |
| Etoricoxib Tablets                                   | 60mg/90mg/120mg     | TOCOX-60/90/120        |
| Ibuprofen+ Paracetamol                               | 400mg + 325mg       | MIXAMOL FORTE          |
| Ibuprofen+ Paracetamol                               | 200mg/400mg + 325mg | MIXAMOL/MIXAMOL PLUS   |
| Mefenamic Acid Tablets                               | 250mg/500mg         | MEMIC-250/500          |
| Mefenamic Acid and Dicyclomine Hydrochloride Tablets | 500mg + 20mg        | MEMIC-SPAS             |
| Mefenamic Acid and Paracetamol Tablets               | 250mg +500mg        | MEMIC-PLUS             |
| Meloxicam Tablets                                    | 7.5mg/15mg          | MEXIGEN 7.5 mg/15      |
| Nimesulide & Paracetamol Tablets                     | 100mg + 500mg       | NIMGEN PLUS            |
| Nimesulide Tablets                                   | 100mg               | NIMGEN                 |
| Paracetamol & Diclofenac Sodium Tablets              | 500mg + 50mg        | ARTHONAC PLUS          |
| Paracetamol & Tramadol Hydrochloride Tablets         | 500mg+ 50mg         | RECEDOL FORTE          |
| Paracetamol & Tramadol Hydrochloride Tablets         | 325mg+ 37.5mg       | RECEDOL PLUS           |
| Tizanidine Tablets                                   | 2mg/4mg/6mg         | SPATIZ-2/4/6           |
| Tramadol Hydrochloride SR Tablets                    | 50mg/100 mg         | RECEDOL/RECEDOL SR 100 |
| Paracetamol Tablets                                  | 500mg               | BYENOL/X-PYRO          |
| Celecoxib Capsules                                   | 100mg/200mg         | COXIGEN 100/200        |
| Indomethacin Capsules                                | 25mg/ 50mg/ 75mg    | ANKYCIN-25/50/75       |
| Nabumetone Tablets                                   | 500mg/750mg         | GENITON-500/750        |
| Piroxicam Caps/Dispersible Tablets                   | 10mg/20mg/20mg DT   | FELOXIGEN-10/20/20 DT  |
| Nimesulide & Paracetamol Suspension                  | (50mg+125mg)/5ml    | NIPADOR                |
| Baclofen Tablets                                     | 10mg/25mg           | FEXOBAC- 10/25         |
| Carisopropdol Tablets                                | 350mg/250mg         | .....                  |
| Ibuprofen Tablets                                    | 200mg/400mg/600mg   | .....                  |

### ERECTILE DYSFUNCTION TREATING AGENTS



| GENERIC NAME                        | STRENGTH   | BRAND                            |
|-------------------------------------|------------|----------------------------------|
| Sildenafil Citrate Tablets          | 50mg/100mg | ABRA-50/100/X-THRILL 50/100      |
| Sildenafil Citrate Chewable Tablets | 100mg      | ABRA SOFT 100 /X-THRILL SOFT 100 |
| Tadalafil Tablets                   | 10mg/20mg  | MORFUN-10/20                     |
| Vardenafil Tablets                  | 10mg/20mg  | -----                            |

## Therapywise Product Range:

### ANTI- FUNGALS

| GENERIC NAME          | STRENGTH               | BRAND                   |
|-----------------------|------------------------|-------------------------|
| Fluconazole Tablets   | 50mg/100mg/150mg/200mg | GRIBQFLU-50/100/150/200 |
| Ketoconazole Tablets  | 200mg                  | KETOBLAST-200           |
| Terbinafine Tablets   | 250mg                  | TINCORIS                |
| Griseofulvin Tablets  | 250mg/500mg            | GRIMASK-250/500         |
| Itraconazole Capsules | 100mg/150mg/200mg      | ZOLGEN-100/150/200      |



### ANTI -ULCERANTS

| GENERIC NAME                                       | STRENGTH       | BRAND                          |
|--|----------------|--------------------------------|
| Esomeprazole Tablets                               | 20mg/40mg      | ESPRAGEN-20/40                 |
| Lansoprazole Delayed Release Capsules              | 15mg/30mg      | LANOCIDOL-15/30/LASOPRAL-15/30 |
| Pantoprazole Sodium Delayed Release Tablets        | 20mg/40mg      | GENOCID-20/40                  |
| Pantoprazole & Domperidone SR Capsules             | 40mg +30mg     | GENOCID-DXR                    |
| Rabeprazole Sod. Tablets                           | 10mg/20mg      | GERDACID-10/20                 |
| Ranitidine Tablets                                 | 150mg/300mg    | ESTORAN-150/300                |
| Papain, Fungal Diastase & Simethicone eff. Tablets | 60mg+20mg+25mg | PEPGEN-EFT                     |
| Omeprazole Capsules                                | 10mg/20mg      | OMAGEN-10/20                   |
| Omeprazole & Domperidone SR Capsules               | 20mg+ 30mg     | OMAGEN-DXR                     |



### ANTIALLERGIC / ANTIHISTAMINES / ANTI COLD AGENTS

| GENERIC NAME  | STRENGTH            | BRAND              |
|---|---------------------|--------------------|
| Cetirizine Hydrochloride & Ambroxol Hydrochloride Tablets                             | 5mg + 60mg          | FRIOGEN-A          |
| Cetirizine Hydrochloride Tablets  | 10mg                | FRIOGEN-10         |
| Desloratadine Tablets   | 5mg                 | GENODES-5          |
| Rupatadine Tablets  | 10mg                | RUDIN              |
| Fexofenadine HCl Tablets  | 60mg/120mg/180mg    | GENAFEX-60/120/180 |
| Levocetirizine Tablets  | 5mg                 | LEVHIST-5          |
| Levocetirizine & Ambroxol Hydrochloride Tablets                                       | 5mg + 75mg          | LEVHIST-AM         |
| Loratadine Tablets  | 10mg                | GENLOR-10          |
| Paracetamol, Chlorpheniramine Maleate, Phenylephrine Hydrochloride & Caffeine Tablets | 500mg+2mg+10mg+30mg | LORGEN             |
| Ambroxol Hydrochloride Tablets  | 30mg                | MUKONIL            |



## Therapywise Product Range:

### ANTI EMETIC



| GENERIC NAME        | STRENGTH | BRAND        |
|---------------------|----------|--------------|
| Domperidone Tablets | 10mg     | GENDON-10    |
| Ondansetron Tablets | 4mg/8mg  | ONDAGEN -4/8 |

### HEMOSTATIC AGENTS



| GENERIC NAME                             | STRENGTH      | BRAND           |
|--|---------------|-----------------|
| Tranexamic Acid + Mefenamic Acid Tablets | 500mg + 250mg | CYKALIK-MF      |
| Tranexamic Acid Tablets                  | 250mg/500mg   | CYKALIK-250/500 |

### STEROIDS



| GENERIC NAME                | STRENGTH      | BRAND          |
|-----------------------------|---------------|----------------|
| Methyl Prednisolone Tablets | 8mg/16mg/32mg | METRIX-8/16/32 |

### ANTI PROSTATE / URINARY INCONTINENCE TREATING AGENTS



| GENERIC NAME                        | STRENGTH          | BRAND                                     |
|-------------------------------------|-------------------|---|
| Finasteride Tablets                 | 1mg/5mg           | PELOSTA-1/5/ FINAPLASIA-1/5               |
| Tamsulosin HCL Capsules             | 0.4mg/0.2MR/0.4MR | TAMPROST/TAMPROST-0.2/0.4/ TAMSIA 0.2/0.4 |
| Tamsulosin MR & Dutasteride Tablets | 0.4mg+0.5mg       | TAMPROST-D/ TAMSIA-D                      |
| Dutasteride Capsules/Tablets        | 0.5mg             | GENOLOSS/ DUGEN/ DUTASIA                  |
| Alfuzosin HCL SR Tablets            | 10mg              | PRESIPRA                                  |

### ANTI-VIRALS



| GENERIC NAME                       | STRENGTH          | BRAND              |
|------------------------------------|-------------------|--------------------|
| Aciclovir Tablets                  | 200mg/400mg/800mg | GENEX-200/400/800  |
| Adefovir Dipivoxil Tablets         | 10mg              | VIROGEN            |
| Entecavir Tablets                  | 0.5mg             | AMISER-0.5         |
| Valacyclovir Hydrochloride Tablets | 500mg/1000mg      | GENVIR 500/1000 mg |
| Famciclovir Hydrochloride Tablets  | 250mg/500mg       | OROVIR-250/500     |
| Amantadine Hydrochloride Capsules  | 100mg             | EXTADIN-100        |



## Therapywise Product Range:

### ANTI - HELMINTHICS



| GENERIC NAME                     | STRENGTH                 | BRAND                          |
|----------------------------------|--------------------------|--------------------------------|
| Albendazole                      | 200/400mg                | VERGEN- 200/400                |
| Ivermectin & Albendazole Tablets | (6mg+400mg)/(12mg+400mg) | IVAVER DT PLUS/IVAVER DT FORTE |
| Levamisole Tablets               | 150mg                    | LEWORM                         |
| Ivermectin Tablets               | 3mg/6mg/12mg             | IVAVER-3DT/6DT/12              |
| Mebendazole Tablets              | 100mg/500mg              | -----                          |

### HEPATO - BILIARY



| GENERIC NAME      | STRENGTH    | BRAND                         |
|-------------------|-------------|-------------------------------|
| Silymarin Tablets | 70mg/140mg  | HIGASIL-70/140                |
| Ursodiol Tablets  | 150mg/300mg | URGAL-150/300/ URDIOX-150/300 |

### SMOKING CESSATION AGENTS



| GENERIC NAME                                     | STRENGTH    | BRAND              |
|--|-------------|--------------------|
| Bupropion Hydrochloride Extended-Release Tablets | 150mg/100mg | NOFUMAR ER 150/100 |
| Varenicline Tablets                              | 0.5mg/1.0mg | SIQUIT-0.5/1.0     |

### ANTI OBESITY AGENTS



| GENERIC NAME                         | STRENGTH   | BRAND           |
|--------------------------------------|------------|-----------------|
| Rimonabant Tablets                   | 20mg       | GENSLIM-20      |
| Sibutramine HCl Monohydrate Capsules | 10mg/15mg  | NAOFET-10/15    |
| Orlistat Capsules                    | 60mg/120mg | MEXISLIM-60/120 |

### HORMONES AND RELATED DRUGS



| GENERIC NAME       | STRENGTH        | BRAND             |
|--------------------|-----------------|-------------------|
| Clomiphene Tablets | 25mg/50mg/100mg | OVAFINE-25/50/100 |

### ANTI-THYROID



| GENERIC NAME        | STRENGTH      | BRAND         |
|---------------------|---------------|---------------|
| Carbimazole Tablets | 5mg/10mg/20mg | CAROX-5/10/20 |



# SYDLER



**SYDLER**  
COMMITMENT • EXCELLENCY • QUALITY

Corporate Office :

Mittal Tower, C Wing, 115, 11th Floor, Nariman Point,  
Mumbai - 400 021 INDIA.

Ph. : +91 -22- 49311555

Email : [sydlerremedies@gmail.com](mailto:sydlerremedies@gmail.com)

Website : [www.sydlerindia.com](http://www.sydlerindia.com)

Registered Office & Factory :

C-7-8(2), MIDC, Bhosari, Pune - 411026, INDIA.